

Feb. 19, 1991/RT

Laing
Barden
North
Sims
Derdowski
Sullivan

Introduced by: Sullivan

Proposed No.: 91-68

9849

ORDINANCE NO.

AN ORDINANCE designating urban growth areas on an interim basis for purposes of implementing SHB 2929, the Growth Management Act, on an emergency basis, adding a new section to K.C.C. Chapter 20.12.

FINDINGS OF FACT:

King County is experiencing rapid growth, both in its cities and in unincorporated King County. The development pressure has had and will have enormous impacts on the ability of the County and its cities to provide necessary services to new development, particularly those areas not designated for urban growth by the 1985 Comprehensive Plan and the Community Plans for subareas of the County.

The 1990 Washington State Legislature approved SHB 2929 (1990 Wash. Laws 17) which mandates that certain counties designate urban growth areas. In accordance with this act, urban growth should be located first in areas already characterized by urban growth that have sufficient existing public services and facilities to serve the development, and second in areas already characterized by urban growth that will be served by a combination of existing and proposed services and facilities. In accordance with this act, urban services should not be provided in rural areas. SHB 2929 calls for the County to work with its cities to determine what areas of the County should be designated for urban growth.

King County is in the process of consulting with cities within the County for purposes of finalizing designated urban growth area boundaries in compliance with SHB 2929. This process began with the preparation of a grant proposal to the Washington State Department of Community Development which authorized the grant in November of 1990. Motion 8087, passed by the King County Council on October 29, 1990, incorporated a regional work strategy. A major element of the work program for the grant is the designation of the urban growth areas. The workplan specifies that the urban/rural boundary of the King County Comprehensive Plan, together with the land use, development and urban service policies of the County and cities, will provide the basis upon which Urban Growth Area decisions will be made. King County will formally designate these areas through amendments to the Comprehensive Plan upon completion of such negotiations. At that time, public hearings will be held. In accordance with SHB 2929, such designations must be completed by July 1, 1993.

1 When the 1985 King County Comprehensive Plan was
 2 adopted, the cities were consulted and participated in
 3 establishing urban areas. The 1985 King County
 4 Comprehensive Plan designated areas as urban,
 5 transitional and rural. The Community Plans, adopted
 6 by the Council, further implement these area
 7 designations for each community planning area.
 8 For each Community Plan adopted pursuant to the 1985
 9 King County Comprehensive Plan, the cities affected
 10 were also active participants.

11 Annexation proposals currently under consideration
 12 include areas both within and outside designated urban
 13 areas as specified by the Comprehensive Plan and the
 14 Community Plans. RCW 35.13.005 specifically prohibits
 15 the annexation of territory beyond an urban growth
 16 area. Annexation or incorporation of areas not
 17 designated for urban growth has the potential for
 18 exacerbating growth related problems. The Council
 19 finds that an emergency exists with regard to the
 20 proposed annexation of areas not designated for urban
 21 growth. Significant annexations are proposed outside
 22 of rural activity expansion areas which would adversely
 23 affect the designations of urban growth areas under
 24 RCW 36.70A.110. Annexations in areas not designated
 25 for urban growth violate the Growth Management Act and
 26 are contrary to the goals of reducing sprawl and
 27 encouraging development in urban areas where adequate
 28 public services and facilities exist or can be provided
 29 in an efficient manner. Without this ordinance, the
 30 ability of King County and the cities to designate
 31 appropriate urban growth areas will be precluded.

32 In order to provide the opportunity to formally
 33 finalize the designation of urban growth areas in
 34 compliance with SHB 2929 and to ensure annexations of
 35 urban areas only, an interim designation of urban
 36 growth areas is necessary to preserve the County's
 37 planning options and ensure that annexations do not
 38 occur which would be in conflict with the urban growth
 39 area and the Growth Management Act.

40 BE IT ORDAINED BY THE COUNCIL OF KING COUNTY:

41 SECTION 1. There is hereby added to K.C.C. 20.12
 42 a new section to read as follows:

43 Designation of Urban Growth Areas on an interim basis for
 44 purposes of implementing the 1990 Growth Management Act.

45 The areas designated as urban by the 1985 King County
 46 Comprehensive Plan as implemented by the adopted community
 47 plans policies and maps and the rural activity expansion areas
 48 for those plans adopted since 1985 and as shown on attachments
 49 1, 2 and 3 are the urban growth areas for King County for
 50 purposes of evaluating potential annexations and implementing
 51 the Growth Management Act pending adoption of urban growth
 52 areas as required by R.C.W. 36.70A.110. These designations
 53 shall remain in effect for twelve months from the effective

1 date of this ordinance or until the King County Council
2 designates urban growth areas and amends the King County
3 comprehensive plan in accordance with Section 4 of the Growth
4 Management Act (R.C.W. 36.70A.040), whichever occurs first.

5 INTRODUCED AND READ for the first time this 14th day
6 of January, 1991.

7 PASSED this 11th day of March, 1991.

8 KING COUNTY COUNCIL
9 KING COUNTY, WASHINGTON

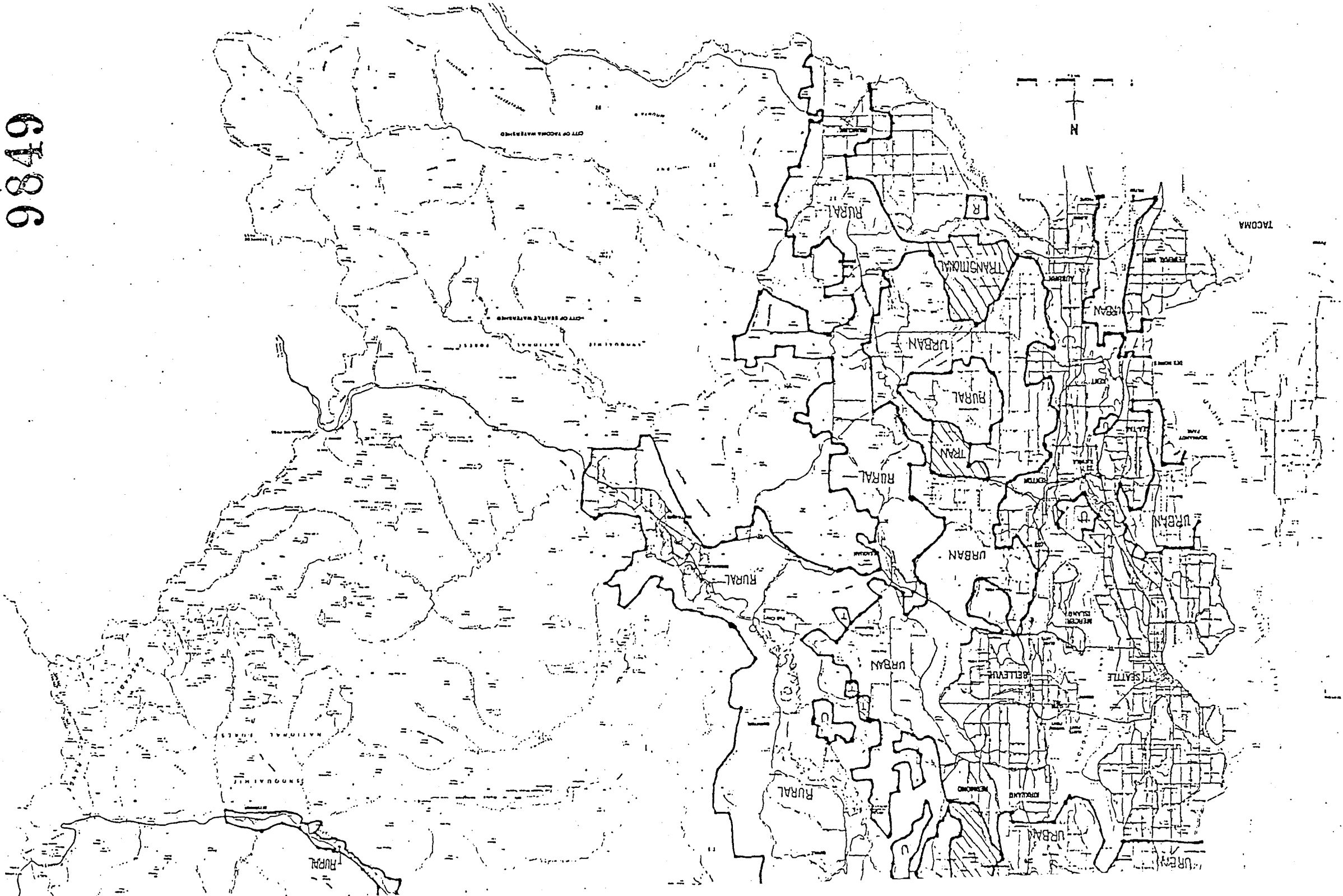
10 Louis North
11 Chair

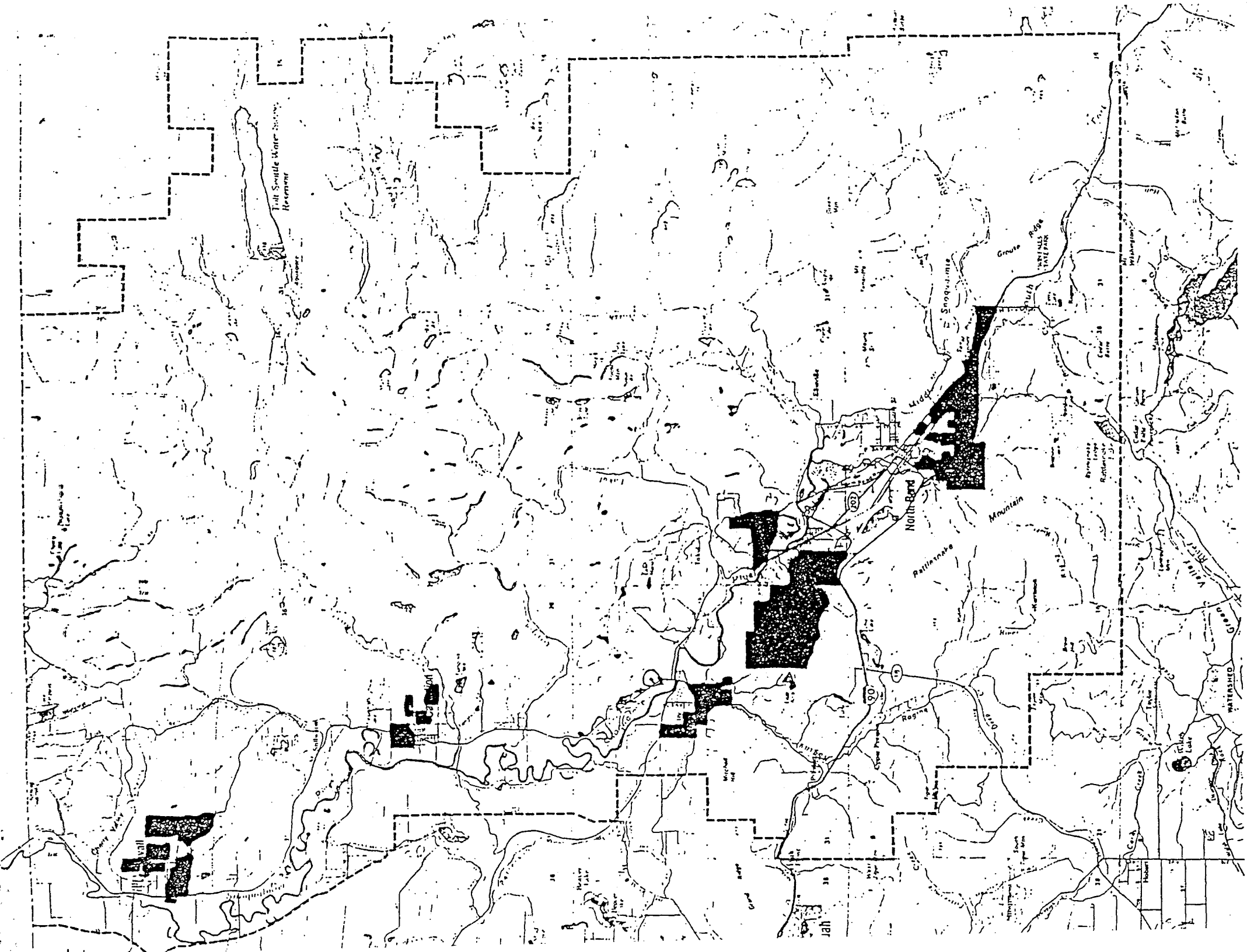
12 ATTEST:


13 Guadalupe Peltre
14 Clerk of the Council

15 APPROVED this 22nd day of March, 1991

16 Don Dill
17 King County Executive





 SNOQUALMIE EXPANSION AREA



Snoqualmie Valley
 Community Plan and
 Area Zoning
 Proposed

6786
9849



ENUMCLAW EXPANSION AREA



Enumclaw

Community Plan
Profile



King County Planning and
Community Development Division
1987

N

